

1) CONSTRUCTION:

CONDUCTOR:	24 AWG 7/32 STRANDED TINNED COPPER	NOM. DIA.	.024"
INSULATION:	HIGH DENSITY POLYETHYLENE, .007" NOM. WALL THICKNESS		.038"
PAIRS:	COLOR CODED SINGLES TWISTED INTO PAIRS		.076"
CABLE:	(3) TWISTED PAIRS TWISTED TOGETHER TO FORM A CABLE CORE		.143"
JACKET:	POLYVINYLCHLORIDE, ( <b>COLOR, PER CHART 1</b> ), .021" NOM. WALL THICKNESS		.185"
	OVERALL CABLE DIAMETER		(BY PI TAPE)

2) PHYSICAL PROPERTIES:

TEMPERATURE RATING, MAX.	60°C & 75°C
TEMPERATURE RATING, MIN.	-20°C
WT./M', NOM., NET.	17.5 LBS.

CHART 1:

QUABBIN P/N	JACKET COLOR
5304	YELLOW
5310	STARLIGHT BEIGE

3) ELECTRICAL CHARACTERISTICS:

CAPACITANCE, MUTUAL, NOM.	13.5 PF/FT. AT 1 MHz
DIELECTRIC WITHSTANDING, MIN.	1500V RMS
VOLTAGE RATING, MAX.	300V
D.C. RESISTANCE, MAX.	26.2 Ω/1,000'
IMPEDANCE, CHARACTERISTIC, NOM.	100 ± 15 Ω 1 – 100 MHz

4) AGENCY APPROVALS:

NEC (UL) TYPE CM/CMG  
CEC C(UL) TYPE CM/CMG

5) APPLICATION:

JUMPER AND PATCH CABLE FOR CATEGORY 5 APPLICATIONS (6 METERS AND LESS). RoHS COMPLIANT MATERIALS.

6) PRINT:

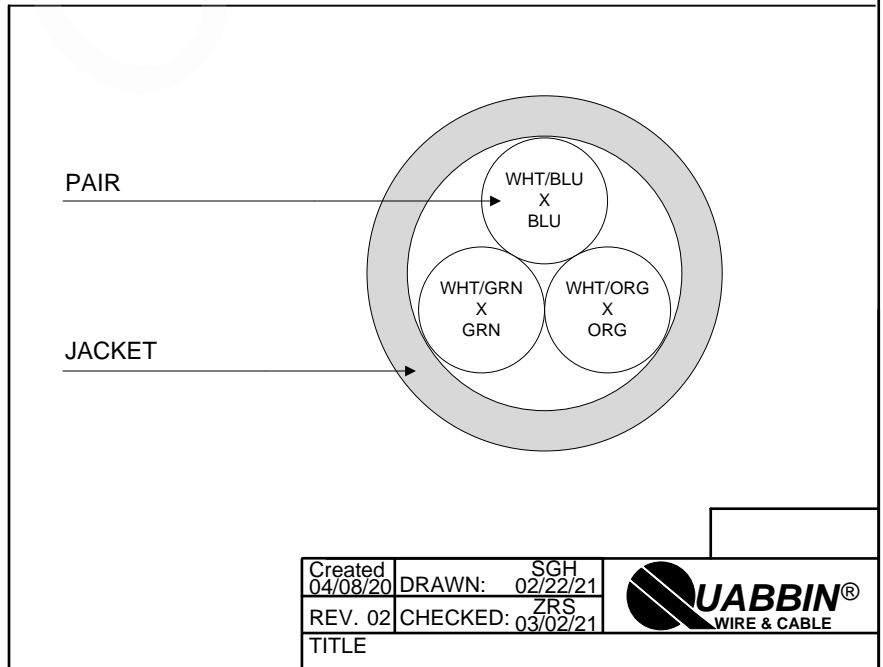
QUABBIN DATAMAX PATCH CORD/JUMPER P/N (**QWC P/N PER CHART 1**) -- CAT 5 -- TYPE CM C(UL)US CMG 24 AWG 75C -- FT4/IEEE 1202 -- RoHS -- (**LOT DESIGNATOR**) (**SEQUENTIAL FOOTAGE**)

7) COLOR CODE:

1. WHITE/BLUE X BLUE
2. WHITE/ORANGE X ORANGE
3. WHITE/GREEN X GREEN

8) PACKAGING:

TO BE PACKAGED AS PER QWC'S STANDARD PACKAGING



CUSTOMER APPROVAL:

DATE:

Created 04/08/20	DRAWN: SGH 02/22/21	
REV. 02	CHECKED: ZRS 03/02/21	
TITLE PATCH CABLE FOR CAT 5		
DRAWING#: QWC0135		1 of 1